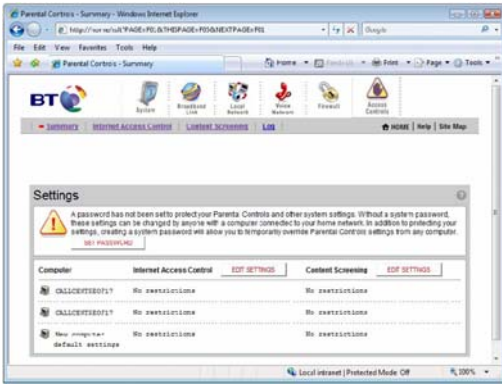


Advanced Feature: Access Control

Your BT Business Hub includes Access Control, letting you restrict what content users on your network can access, and what times they can access the Internet.



Internet Access Control

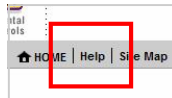
Use Internet Access Control to change the times that you wish to allow different users access to the Internet. You can specify what times and days for access by different types of activity, such as browsing and Instant Messaging.

Content Screening

Use Content Screening to limit the kind of content that users can browse. You can assign each user to one of two groups, each offering different content filters.

Troubleshooting

You can find extensive online help on the BT Business Hub control screen by clicking **Help** on the grey menu.



Broadband light flashes:

Check your microfilters - there should be a microfilter on each telephone extension on which a telephone device is used. Make sure that you don't use two microfilters on the same extension.

If you are using a telephone extension cable, try connecting your BT Business Hub directly on the master telephone socket. Telephone extensions are a common cause of connection problems, it is advisable that you use the wireless networking rather than a telephone extension cable, if you are unable to place your computer close to your master telephone socket.

Status Lights

Power	State
Off	Hub not powered, check power cable and power socket.
Blinking Green	Hub is starting up, should stop blinking after a short time.
Blinking Orange	Hub is updating its firmware, wait till Hub restarts.
Red	System error, restart the Hub.

DSL	State
Off	No DSL cable connected/ Microfilter or phone line problem.
Blinking Green	Hub is attempting to connect to local telephone exchange. Blinking becomes fast if connection fails for more than 3 minutes.
Solid Green	Hub is connected to local telephone exchange.

Internet	State
Off	No broadband service connected.
Solid Green	Broadband service connected.
Blinking Green	Attempting to connect to broadband service.
Solid Red	Connection to broadband failed. Recheck username and password.

Ethernet, Wireless or USB	State
Off	No device connected.
Solid Green	Device connected.
Flashing Green	Device sending / receiving data.

Internet light flashes / turns red

If the Internet light flashes then turns red, this indicates that your broadband service has been detected, but you are not able to connect to it.

The most common reason for this is incorrect username or password information. You can retype these by clicking on **Broadband Link** and **Advanced Settings**.

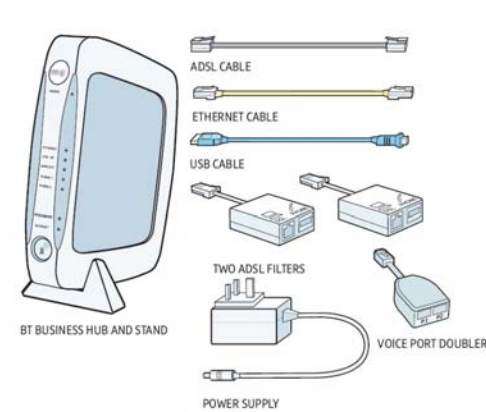


If you need further help in getting your BT Business Hub set up, contact your Corporate Administrator.

Introduction

Use this guide to get your BT Business Hub set up and connected to your Teleworker service. If you have any problems with your installation, contact your Corporate Administrator for further assistance.

Your Starter Pack contains:



Before you start:

Has your service been activated?

Don't follow these instructions until you have received confirmation that your broadband service has been activated.

Have you got your broadband username and password to hand?

To complete the set up of your BT Business Hub you will need the broadband username and password.

Have you uninstalled any previous hardware devices?

If you already have a USB broadband modem installed on your computer it must be uninstalled before continuing.

Where is the installation CD?

The BT Business Hub does not require an installation CD, just follow the instructions in this guide.

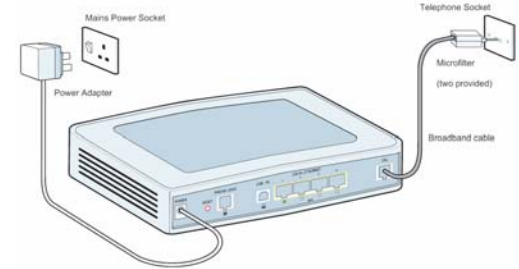
USB Support

Although the BT Business Hub supports USB, you may need to download USB drivers in order for this type of connection to work.

Download drivers at—
<http://www.bteleworker.com/>
 > Support
 > Technical Support
 > Broadband hardware setup guides

Setting up your Business Hub

1) Plug a microfilter in between the wall socket and each device that shares the telephone line. This applies not just to telephones but can also include fax machines, burglar alarms, and any digital satellite equipment. You should have received two boxed microfilters with your BT Business Hub.



2) Plug the Power Adapter into the back of your BT Business Hub (socket marked 'Power'), then plug the other end of the Adapter into the nearest mains power socket.

3) Plug one end of the grey broadband cable into the DSL socket on the back of the BT Business Hub and plug the other end into the microfilter (attached to your phone line in step 1). The microfilter socket is also marked DSL.

4) Ensure that the power is switched on and monitor the lights on the front of the BT Business Hub. Note: you can choose to place the Hub flat on a desk, or attach the stand so that it can stand on its side, taking up less desk space.



5) Wait till the power light stops flashing and turns green. The broadband status light will flash.

Wait until it stops flashing before proceeding.

If the broadband light doesn't stop flashing, read the troubleshooting

section found at the end of this guide before continuing. See the troubleshooting section for more information about the status lights.

6) You can now connect your computer to the BT Business Hub. You connect using one of three methods. Ethernet, Wireless or USB, each of these connection types is addressed separately in the next section.

Connecting to your BT Business Hub

Connecting with Ethernet

1) Plug the yellow Ethernet cable into LOCAL ETHERNET port 1 (Any of the 4 available ports will work).

2) Plug the other end of the Ethernet cable into your computer's Ethernet Port. The Ethernet status light on the front of your BT Business Hub will now light up. If the status light doesn't light up, check your cable is connected properly, check that your computer's network adapter is working.

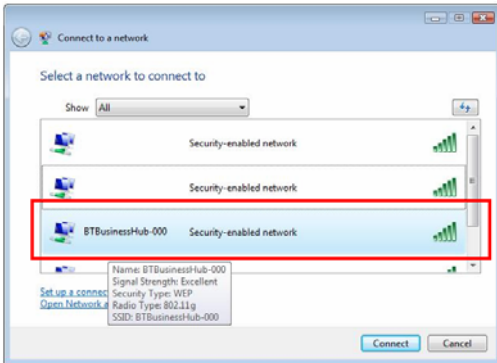
3) Proceed to the section called Configuring your BT Business Hub.

Connecting with Wireless

(Requires that your computer be equipped with a wireless adapter)

1) Ensure that your computer's wireless adapter card is installed and working properly.

2) Use your wireless adapter's connection utility, or from **My Network Places** select **Connect to a network**.



3) Your BT Business Hub will show up as **BTBusinessHub-000**. Click on it, then click the **Connect** button.

4) A window will open, asking you to type in the network Security Key or passphrase for your BTBusinessHub-000.

5) You need to type in the security key that is written on the label on the bottom of the hub. Use the second number, not the serial number on the top of the label. When typed in, click **Connect**.

6) Proceed to the section called Configuring your BT Business Hub.

Connecting with USB

We recommend using USB only if absolutely necessary. You will need to download drivers before installing your BT Business Hub

Download Drivers at -

<http://www.bttelworker.com/>
>Support
>Technical Support
>Broadband hardware setup guides

1) Double-click on the downloaded driver file. Run the file and save the BT Business Hub drivers on your computer.

2) Plug the blue USB cable into the USB socket of your BT Business Hub.

3) Plug the other end of the USB cable into a USB socket on your computer.

4) A window will appear asking to Add New Hardware. Proceed with the on-screen instructions. When asked to locate the driver files, select the location where the driver files were downloaded. By default this is "C:\TWUSB_TEMP"

5) The USB drivers will now install. This may take a few minutes. Once complete, check that the power and USB light status lights are both green. Then proceed with the next section, Configuring your BT Business Hub.

Configuring your BT Business Hub

1) Open up a web browser. Ignore the message that comes up saying that "Cannot connect to server". In the address line of your browser type in "http://home". Press **Enter** on your keyboard. If this fails, instead use "http://192.168.1.254".

2) The BT Business Hub's Setup screen will appear.

3) Click on **Run System Setup Wizard**.



4) First you will need to enter a Key Code. This ensures that UK settings are automatically applied to your hardware.

If the Key Code is not automatically populated, type in **528Y-27G4-A222-22BJ-B22V**

make certain that you have the information provided to you by your service provider for the following installation steps.

For your BT2700HGV enter the 20-character key code that has been provided on your key code, you can obtain one online at www.2Wire.com/keycode.

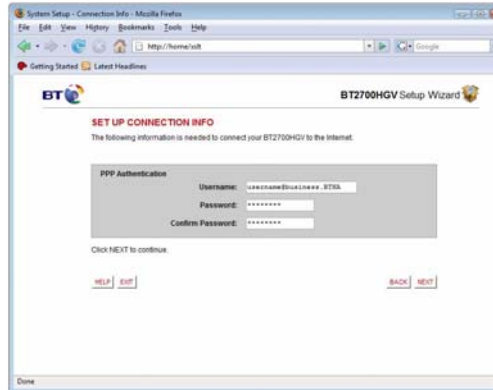
Key Code: 528Y - 27G4 - A222 - 22BJ - B22V

Continue.

For more advanced, you can manually configure your BT2700HGV. Enter in your Key Code in the ADVANCED.

5) Click **Next** and proceed to the next screen. Select the default Greenwich Mean Time. Click **Next**.

6) On the Set Up Connection Info screen, type in your broadband username and password.



Your Broadband username will look like - <username>@<business_unit_id>.BTHA

or mxtwuk/username^companydomain.extension

7) The BT Business Hub will now attempt to connect to your broadband service. If you encounter a problem, click **BACK**, check and retype your username and password.

8) Your BT Business Hub will now be connected to the Internet. You can confirm this by checking that the Internet status light is green. Congratulations, your broadband service is now ready to use.

Advanced Feature: Firewall

The BT Business Hub comes with a built-in firewall, to help protect your business from intrusion. The firewall's default setting will offer you excellent protection. You may need to alter the firewall's settings if you need to run Internet services from your network.

Changing your firewall settings

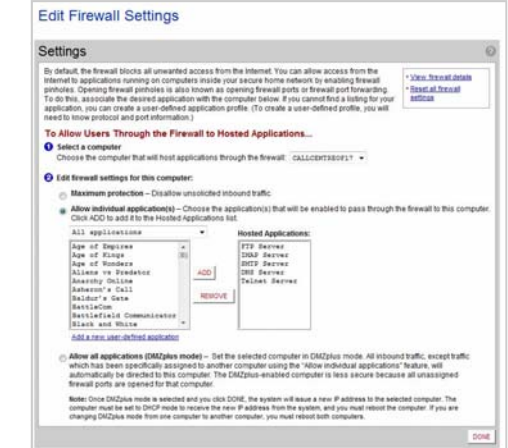
1) Click on the **Firewall** button on the top bar of your BT Business Hub control screen.



2) Click on **Firewall Settings** on the grey menu bar.



3) On the Firewall Settings screen you can select from a list of applications and games that you wish Internet users to be able to access on your network. Just click on an application and click the **Add** button. Once you have selected all the applications you need, click **Done**.



Advanced Feature: Digital Phone

Your BT Business Hub includes a built-in telephone port that supports two separate phone lines. Use the line doubler to provide two telephone connections to your Hub.



Click on **Voice Network** and follow the on-screen instructions for setting up each phone with single or multiple phone numbers.

Note: calling Emergency Services (dialling 999) may not work using Digital Phone in the event that there is loss of power.