



Your Voyager 105 USB Modem Setup Guide (PC)



Important – if you have any other USB modems installed on your computer these must be uninstalled before continuing.

Windows XP Users – Before you begin the installation please ensure that you have updated to Service Pack 1. You can see if this needs to be done by visiting <http://windowsupdate.microsoft.com>. If you do not do this, you will experience slow speeds when connected.

Microfilter – Sometimes called splitters. You need to ensure that all the devices connected to your phone line are filtered in order for ADSL to work correctly. If you are unsure how the filters that we have provided should be configured then look at the tutorial, available at <http://www.voyager.bt.com/usb105/microfilters.htm>

Your Starter Pack should Include: 1 x Voyager 105 USB Modem (illustrated above) 1 x USB cable (blue)
1 x Telephone cable (black) 2 x Microfilters (individually boxed) 1x Installation CD and Setup Guide.

1 Fit a micro-filter in between the wall socket and each device that shares the telephone line. This is not just telephones but can also include fax machines, burglar alarms, and any digital satellite equipment. You should have received two individually boxed microfilters with your modem.

2 Plug one end of the telephone cable into the DSL socket on the modem, and plug the other end into the microfilter socket marked DSL.

3 Insert the installation CD (the one included with your modem) before connecting your ADSL modem to your PC's USB port. Click **Install Drivers** (the second option on the menu screen shown in **figure 1** below) Ensure that you have read the ten points on the Getting started screen, shown in **figure2**, before clicking on **Install Drivers**. The drivers will now start to install onto your hard drive and will only take a few minutes.



Figure 1

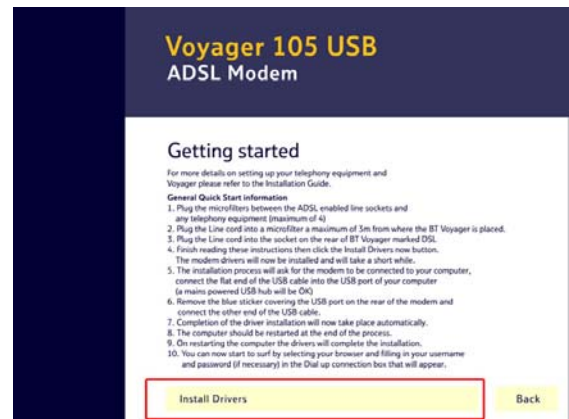


Figure 2

4 During the installation process, you will be asked to plug your modem into an available USB port in your computer. Your computer will then detect new hardware and complete the installation of your modem. You may be requested to restart your computer to complete the installation. If you are running Windows 98SE, the Windows installation disk may be required in order to complete the modem installation.

5 The installation software will have set your Voyager 105 ADSL Modem as the default modem connection for your browser. You may have to configure other Internet applications i.e. mail, newsreader etc to use this modem connection. Double click the Voyager 105 ADSL Modem connection icon in your System Tray, indicated in **figure 3** (bottom right corner of your screen). This will open the Modem Control Panel



Figure 3

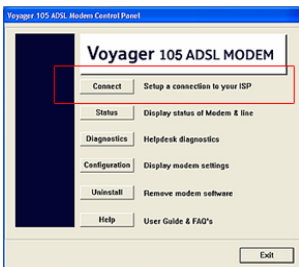


Figure 4

Click **Connect** on the Modem Control Panel, as shown in **figure 4**, enter your broadband username and password in the window that opens.

Your broadband username is sent to you by email once your ADSL account is activated. It will be either :

`<username>@<businessid>.btha`

or

`mxtwuk/username^companydomain.extension`

Congratulations, you have successfully completed the setup of your broadband connection. If you have any problems with the installation, you should contact your corporate administrator.