

# Your Binatone ADSL500 USB Modem Setup Guide

Follow our exclusive guide to get your new modem installed quickly and easily. This guide is based on the Windows operating system. For information on the Macintosh installation process please see the included manual but please **note that OS9 and below is NOT supported**.

If you have any other USB modems installed on your computer these must be uninstalled before continuing.

**Important – Windows XP Users** – Before you begin the installation please ensure that you have updated to Service Pack 1. This can be done by visiting <http://windowsupdate.microsoft.com>. If you do not do this you may experience slow speeds

**1** Before connecting your ADSL modem to your PC's USB port insert the installation CD into your CD drive. The installation will start automatically. Click "**Continue**" when prompted.

You will be asked to select which country you are connecting from. Select "**UK**" and click "**Continue**". You will then see the Modem Setup Wizard.

If the installation wizard does not automatically start, find and double-click the file setup.exe on the included CD.

**2** Next click on the "**Advanced Settings**" button. This will pop up another smaller window where you need to select "**Communication Setting**".

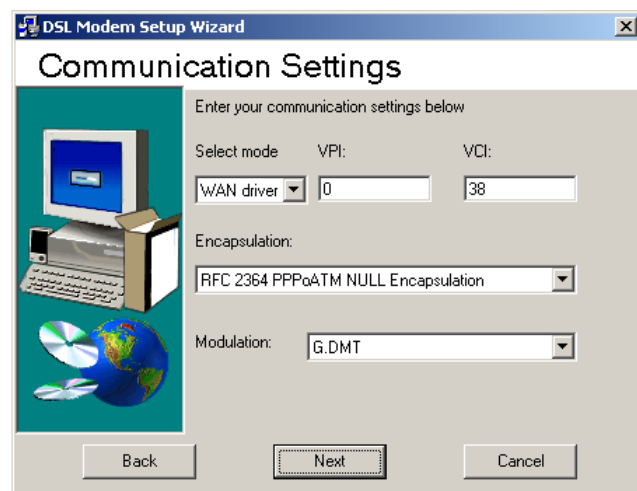
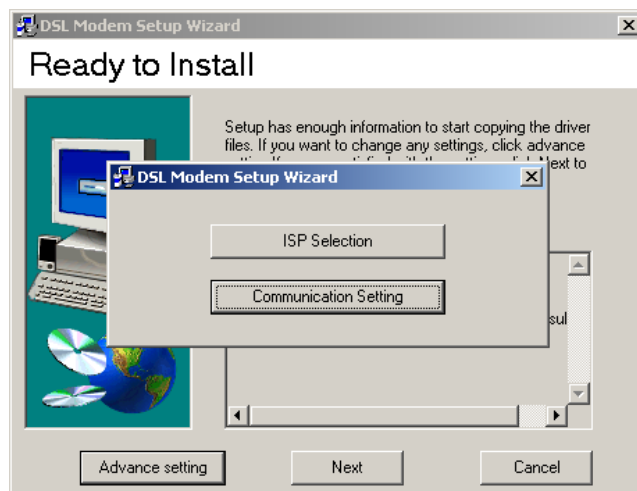
**3** In the Communication Settings window, shown here on the right, enter the following details:

- Select Mode - WAN Driver
- VPI - 0
- VCI - 38
- Encapsulation - RFC2364 PPPoATM NULL Encapsulation
- Modulation - G.DMT

When you have entered the details above, click "**Next**" and then click "**Next**" again.

**4** Your PC will now automatically be prepared for the installation of the drivers. If you are prompted by Windows with the error "*Digital signature not found – do you wish to continue the installation*" click "**Yes**".

You will be prompted with "*the DSL installer is searching for installed hardware. If your modem is not yet plugged into your computer, plug it in now*"



**5 Important – Windows XP users**, when you plug the USB modem into the computer, you may see the "*found new hardware wizard*" pop up. You should ignore this as it will disappear during the installation process. Closing this down or clicking through the wizard during the driver installation **will** cause the installation to fail.

When the installation process has been completed click "finish". If any error messages are displayed during the installation process, restart your computer and return to step 1 of this install guide

**6** An icon named "**Binatone ADSL 500 USB Modem Dial-Up PPP Connection**" will be created on your Windows Desktop area. Open your ADSL Connection by double-clicking this icon.

**7** Enter your ADSL username in the window that appears. Your ADSL username will be sent to you by e-mail once your ADSL account is activated, and is different to the username chosen during the signup process. In the **Password** box enter the password you chose when signing up for your ADSL account. **Important - Windows 98** users need to enter "**0,38**" in the phone number box here.

Now click Dial or Connect. Congratulations, you're now connected to ADSL!