

Your BT Voyager 1050 Wireless Adapter Guide



Important –

If you are installing this wireless adapter as part of an existing wireless network with a base unit (e.g. BT Voyager 2100), you should install and switch on the base unit before proceeding.

Do not plug in your BT Voyager Wireless Adapter until instructed to do so in this guide. You will need an available USB socket, if you are using a USB hub, it must be mains powered. Windows 98SE users may require their windows CD during installation.

Your Wireless Pack Contents:

- 1 x BT Voyager 1050 PCI Wireless Adapter
- 1x USB Cable
- 1 x Quick Start Guide and CD

Software Installation

Before installing your USB Wireless Adapter you should install the driver software.

1 Insert the BT Voyager 1050 USB Adapter CD into your computer's CD-ROM drive. The CD will autoplay, bringing up a menu screen from where you can start the installation process.

2 To install, click **Install BT Voyager Wireless Adapter**, on the next screen click **Installation** to start loading the driver files onto your computer. Follow the on screen prompts until the installation process is complete.

Hardware Installation

You are now ready to plug the Voyager 1050 USB Adapter into your computer.


3 Plug your USB Adapter into a free USB socket, using the USB cable provided in your wireless pack. Windows will detect your new hardware.

4 If presented with the Found New Hardware wizard, click **Next**. If prompted for the location of the drivers, select **CD-ROM**.

5 When the driver files have finished copying, the hardware Installation is complete. You should restart you computer before configuring your wireless hardware.

Getting Connected

You are now ready to connect to your wireless network.

6 On restarting your computer after completing installation, a new status icon, either  will be added to your Windows system tray, located with the clock in the bottom right corner of your screen.



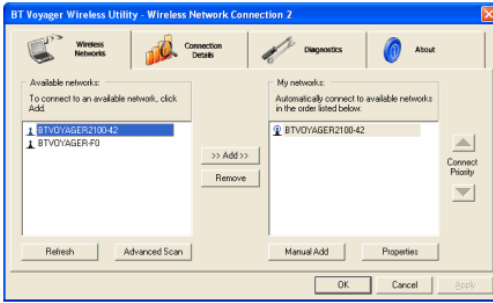
Icon indicates network not configured



Icon indicates network configured

Instructions continue on other side

7 Click the icon to list the wireless networks available to connect:



8 All available networks will be listed in the left window on the Wireless Networks tab. Click the network you wish to connect to. Click **>>Add>>** button to use the selected network. If your network is secured, you will be prompted for the WEP or WPA key. Enter the key and click **OK**.

9 Your computer is now connected to the wireless network and you are ready to set-up your Internet Connection. You should consult the instructions that came with your base unit on how this is done.

For more information about configuration, security and file sharing, read the User Guide located on the Adapter CD.

Notes on placement

The BT Voyager 1050 USB Adapter has a moveable antenna. A better range will be achieved if the antenna is placed pointing upwards. Reception may also be improved by placing the unit higher up, on a desk or table for example.

Avoid situating the adapter in places that expose it to direct sunlight or high levels of humidity.

If you require assistance with the installation of your Voyager 1050 USB Wireless Adapter - please contact your corporate administrator.

Instructions begin on other side