

Your BT Voyager 2100 Wireless Router Guide



Important – if you have another broadband modem installed on your computer it must be uninstalled before continuing.

Fitting Microfilters (splitters) You need to ensure that all the devices connected to your phone line are filtered using the supplied microfilters, in order for ADSL to work correctly.

Your Starter Pack Contents:

- 1 x BT Voyager 2100 Wireless Router
- 1 x Ethernet cable (grey)
- 1 x Telephone cable (black)
- 1x Power Supply
- 2 x Microfilters (boxed)
- 1x Instruction CD and foldout Quick Start Guide

1 Fit a microfilter in between the wall socket and each device that shares the telephone line. This applies not just to telephones but can also include fax machines, burglar alarms, and any digital satellite equipment. You should have received two boxed microfilters with your router.

2 Plug the Power Supply into the back of your router (socket marked Power), then plug the other end of the Power Supply into the nearest mains socket.

3 Plug one end of the black telephone cable into the DSL socket on the back of the router and plug the other end into the microfilter (attached to your phone line in step one). The microfilter socket is also marked DSL.

4 Press the Power button on the back of the router to switch it on. The Power light on the front will turn Green.

5 Wait until the DSL light stops flashing and goes solid green. Once this happens your wireless router has been successfully set-up. Please turn over for instructions on how to connect to your broadband service.

Troubleshooting

If the DSL light continues to flash for more than a minute, check your ADSL cable and microfilters, and only use the cables provided in the pack. Ensure no other broadband equipment is installed on your computer. For more help, view the included foldout Quick Start Guide, or go to the support section of our portal website.

Instructions continue on other side

Getting Connected

Important – This guide assumes that you have already installed your wireless adaptor. This is the device that connects to your PC or laptop that allows it to connect to your Voyager 2100 Wireless Router.

You can find more information about setting up your wireless adaptors on the foldout Quick Start Guide as well as on the support section of our website.

6 Start your Internet browser and type in the address **192.168.1.1**

7 The Configuration Manager screen should open (see figure 1 below).

8 On the Configuration Manager screen, enter your Broadband User Name and Password. Your Username will take the following form:

Your broadband username:

<username>@<business_unit_id>.BTHA

or

mxtwuk/username^companydomain.extension

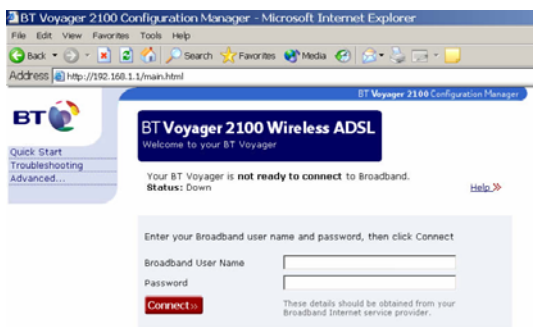


Figure 1

9 Click **Connect**.

10 Congratulations - your BT Voyager 2100 Wireless Router is now connected to your broadband account. You will be able to access the Internet from any computer on your network.

Note that once these details have been set you should not need to enter them again. Simply start your email client or web browser and you will be connected automatically.

Important Security Information

You should read step 7 on the foldout Quick Start Guide to learn how to secure your wireless network.

Troubleshooting

If the Configuration Manager screen does not appear, you may need to change your computer's network settings. Note that the Configuration Management settings are protected by a username and password – these are both set to **admin** by default. Read the Troubleshooting section of the foldout Quick Start Guide for more information.

If you require assistance with your username, password or the installation of your Voyager 2100 Wireless Router please contact your corporate administrator.

Instructions begin on other side